



HIGH-PERFORMANCE WIRE SPEED CABLE MODEM

Terayon's TeraJet™ 210 DOCSIS Cable Modem is a high-performance, CableLabs certified device that delivers data at wire speed, which virtually eliminates troublesome network bottlenecks. Available with Ethernet and USB connectivity, the TeraJet 210 DOCSIS Cable Modem assures that service providers achieve seamless installation and proven performance with any DOCSIS-compatible headend equipment, including Terayon's BE 2000 and 2800 Systems.

The TeraJet 210 Cable Modem can be managed via any SNMP-based management platform, including Terayon's TeraJet Management Application (TMA), which enables simple, Graphical User Interface (GUI) troubleshooting of any TeraJet device. The TMA can also search for a specific modem by IP address or ESN, as well as monitor its operational parameters. In addition, the TMA can operate in remote mode via SNMP for Customer Service Representatives, as well as in local mode via the modem's Ethernet port for Field Technicians.

The TeraJet 210 Cable Modem's small form factor allows convenient horizontal or vertical placement near a PC, Mac OS, or UNIX workstation. Front-mounted LEDs indicate the modem's current status and simplify both installation and fault detection. And the device is highly scalable, with one TeraJet 210 Cable Modem capable of supporting up to 16 PCs, thus providing cost-effective, highly efficient broadband access for workgroups and small offices. The TeraJet 210 Cable Modem will support a number of Internet applications including:

- Broadband Internet access with any DOCSIS-standard system
- Telecommuting
- Multiple PC workgroups
- Education and community networks
- Online gaming, download music, shop

FEATURES AND BENEFITS

- **Unmatched interoperability**—DOCSIS 1.0 certification by CableLabs and advanced MIB support ensure compatibility with DOCSIS-based service networks.
- **Proven cost-effectiveness**—Field-upgradeable software minimizes truck rolls and reduces product life cycle costs.
- **Unsurpassed performance**—High downstream data rate up to 38 Mbps, as well as ability to forward 14,000 64-byte packets-per-second, provides full line-speed data transfer, thus eliminating bottlenecks.

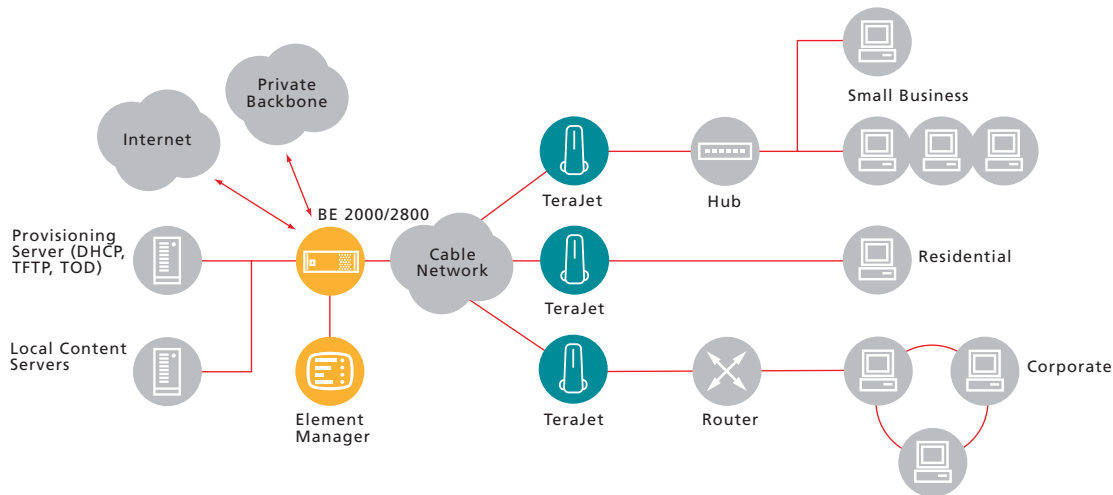
- **Robust scalability**—Supports up to 16 PCs for workgroup and small office networks.
- **Value-added service**—IGMP Proxy support enables efficient control and delivery of streaming media multicast services.
- **Low-profile form factor**—Compact size and simple installation with a small, unobtrusive external power adapter.
- **Five-year warranty**—Full product life cycle support means worry-free operation.

Terayon Communication Systems—your trusted broadband networking partner—offers an end-to-end suite of integrated, standards-based, carrier-class voice, data, and video systems and solutions for the communications industry. Our innovative, next-generation products enable a wide range of new customer service opportunities that fully leverage your existing cable, telco, broadcast, and satellite infrastructures. The result is an unbeatable combination of new, value-added revenue streams and maximum investment protection.



888.7.TERAYON
408.727.4400
www.terayon.com

CABLE RECEIVER SPECIFICATIONS		REGULATORY SPECIFICATIONS	
Modulation type	64 and 256 QAM (ITU-T J.83 Annex B)	Safety compliance	UL1950, CSA 950
Channel transmission rate	30 and 43 Mbps	Electromagnetic emissions	FCC Class B, CISPR 22, Class B, CE Mark
Channel bandwidth	6 MHz		
Receive frequency range	88 to 860 MHz (Standard, HRC, IRC channels)	PHYSICAL INTERFACES AND SPECIFICATIONS	
Input level	-15 to +15 dBmV	Model number	ECM 210
Input impedance	75 ohms	PC client computer	10Base-T (RJ-45) and Universal Serial Bus (USB)
C/N for 10 ⁻⁸ BER	≤23.5 dB for 64 QAM, ≤30 dB for 256 QAM	CATV network	75 ohm female "F" type connector, 360° threaded
		LEDs	Power, cable, PC, data, test
CABLE TRANSMITTER SPECIFICATIONS		Dimensions	
Modulation	QPSK and 16 QAM	Modem	2.3" wide (5.7 cm)
Channel access	TDMA		7.9" deep (20.2 cm)
Channel transmission rate	320 Kbps to 10.24 Mbps		5.9" high (15.07 cm)
Channel symbol rate	160 KSps to 2.56 MSps	External power adapter	2.2" wide (5.6 cm)
Channel bandwidth	200 KHz to 3.2 MHz		1.8" deep (4.6 cm)
Transmit frequency range	5 to 42 MHz		2.8" high (7.1 cm)
Output power	+8 to +58 dBmV	Weight	
		Modem	1.5 lbs. (0.68 kg),
		External power adapter	1.3 lbs. (0.59 kg)
NETWORK LAYER		Installation	Desktop vertical or horizontal placement
Downstream performance	10Mbps, >12,000 pps with 64-byte packets		
Upstream performance	>300 pps (limited by CMTS performance)	OPERATING REQUIREMENTS	
Upstream concatenation	Supported	Operating temperature	32° to 104° F (0° to 40° C)
Upstream rate limiting	Supported using Token Bucket algorithm	Storage temperature	-4° to 140° F (-20° to 60° C)
SNMP	DOCSIS MIBs	Humidity	10% to 90% non-condensing
IGMP	IGMP Proxy to support multi cast services	Electrical:	
		Modem	12V DC, 500mA typical
		External power adapter	8 watts
CPE devices supported	16	SYSTEM REQUIREMENTS	
Filtering	Ethernet, LLC, and IP filtering, operator configurable	Windows 98-SE, Windows 2000	
IP filtering rules	32	Mac OS 8.0 or higher	
LLC filtering rules	16		



2952 Bunker Hill Lane
 Santa Clara CA 95054
 fax 408.727.6205
 408.727.4400
www.terayon.com

